

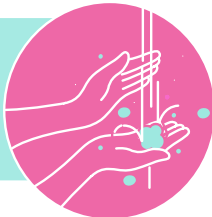


# WHEN TO USE PERSONAL PROTECTIVE EQUIPMENT (PPE) IN AGED CARE

PPE should be worn whenever you are caring for someone with a confirmed OR suspected case of COVID-19, or in quarantine.



Before putting on any PPE, you must wash your hands using soap and water or alcohol-based hand sanitiser



Put on the PPE before you enter the room/ person's home.



When you're providing clinical or personal care to them you will need to wear a:

- Gown
- Mask
- Protective eyewear
- Gloves



Where a care recipient is in quarantine and they are not showing symptoms, eye protection is **not essential**



After treating a patient, all PPE should be removed – gloves and gown, then mask (without touching the front of it) before exiting the room/person's home.



You must then wash your hands using soap and water or an alcohol-based hand sanitiser immediately after removing all PPE.



**Quarantine** is a precautionary period of self-isolation for someone who is well, but is at risk of infection through their recent movements or exposure.

**Isolation** is when a person is confirmed or suspected to have COVID-19.

PPE is a limited resource so please only use it when it's needed

To prevent the spread of disease it is important to remember to always practice good hygiene. Everybody should

- Wash your hands for at least 20 seconds
- cough or sneeze into a tissue or your elbow and wash your hands
- Stay 1.5 metres from others when not providing direct care

